

Brandeis National Committee

Philanthropy.
Learning.
Community.

IN SUPPORT OF BRANDEIS UNIVERSITY

The Clearbrook Chapter Bulletin JANUARY-FEBRUARY 2015

BRANDEIS GENERAL MEETING

Thursday, January 22, 2015

12:30 PM - Cultural Center

We will be entertained by the group

Impulse

an a capella barber shop quartet.=

Refreshments will be served

No meeting in February

From all of us to all of us

Have a Happy and Healthy New Year





The BU
Campus

The
Old

The
New



Our Presidents' Message –Jan-Feb 2015

Through our trips we have been learning a lot about women and the impact their lives have made on us.

First in time came Helena Rubinstein. She was the first modern self-made women magnate and with the expression Beauty is Power she encouraged women of her era to recognize the woman you are, which was a novel idea for her time period.

Doris Duke through her extensive horticultural experience left Duke Farms for us to enjoy.

Two professors, Barbara Fleisher and Thelma Reese interviewed various senior women and used this information to paint a picture of the new senior woman.

Looking forward to February 7th, when we will see The Whipping Man at the George Street Playhouse. Of course, we will be picked up in Clearbrook by a bus which will take us to the playhouse where we will have a catered lunch from Old Man Rafferty's.

Did you know that this year's Brandeis freshman have come from 36 states and 34 countries. Two-thirds ranked in the top 10 percent of their high school graduating classes, and 93 percent were in the top quarter. Leading up to their arrival to Brandeis, they worked for the disadvantaged in urban American and the upper Amazon, participated in communal and religious organizations, made films and music, and studied and traveled just about everywhere.

Administrators say the class size of just over 820 new students is deliberately somewhat smaller than last year's, reflecting a focus on maintaining Brandeis intimate environment and not overtaxing the university's capacity.

We are looking forward to visiting Brandeis University in April to see how our fund raising has helped to enrich the University and its students. Come join us April 22 & 23, 2015.

Isabelle and Tammy



BRANDEIS-ON-THE-GO

THE VERY POPULAR ANNUAL WINTER LUNCH AND SHOW

Opens at November-General Meeting

Date: Saturday. February 7, 2015 – Matinee Performance

Show: “THE WHIPPING MAN”

Place: George Street Theater

Cost: \$69 for members and \$79 for non-members.

Enjoy a delicious lunch catered by Old Man Rafferty’s

Call Isabelle Tucker for Reservations at 609-860-1856

Brandeis Overnight

To: Yiddish Book Center and Brandeis University

Date: April 22-23, 2015 Total Cost: \$266 as follows:

1. **\$166 - due at registration,** Includes Travel, Admissions, Tours, 1 Hot Breakfast, & 1 Lunch at Brandeis Faculty Dining Room.
2. **\$100 p/p (2 in a room),** at Holiday Inn Express in Waltham, Mass., (Booked individually – We will try to do this together)

Call Beth Curtis- 609-860-9077

Card & Games & Lunch - Wednesday, March 25, 2015, Time: 12-3:30

At the Cultural Center – Cost \$18.00

Call Marlene Metrick – 732-614-1171/655-2932 or

Norma Rothstein- 395-069

The Ballet - Saturday Evening, April 11, 2015 – “Don Quixote”- 8 PM

At the State Theater, New Brunswick - Bus included

Cost: \$80 Members \$90 Non- Members

Call: Barbara Allen – 395-1510 or Fran Cohen – 655-2075 for reservations

NOT AFFILIATED WITH OR SPONSORED BY CLEARBROOK COMMUNITY ASSOCIATION

TRIP POLICY REMINDER

Any expense incurred by Brandeis cannot be refunded. If there is no waiting list and if a member transfers his/her participation in a trip to a non-member an additional \$10 is required. Refunds will be made after the final accounting for each trip. We are happy to refund any sum for which we are not held accountable.

NEW: If anyone who has signed up for a trip must cancel, that person must call the leader of that trip about a possible replacement from the wait-list.



Join
Our Overnight

ON

April 22-23, 2015

WE WILL HAVE DOCENT TOURS OF

**YIDDISH BOOK CENTER
AND
BRANDEIS UNIVERSITY**

Total Cost: \$266

**Includes: Travel, Admissions,
Hotel- 2 persons per room at \$100 p/p,
Hot Breakfast at Holiday Inn Express.
Lunch at Brandeis Faculty Dining Room.**

For reservations and more details :

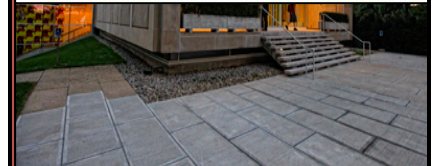
Call Beth Curtis - 609-860-9077

Please Send Checks to Beth Curtis

**791A Pompton Road
Monroe Twp, NJ 08831**

Travel Responsibility Statement

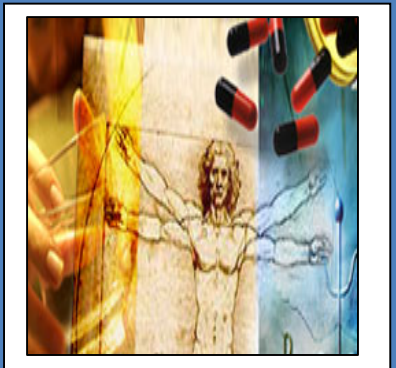
BU and BNC are not responsible or liable for the acts or omissions of any providers of tour services, including but not limited to hotels, restaurants, bus carriers, or any other person or entity engaged in carrying out tour arrangements, (e.g. changes in hotel arrangements, itinerary or fare changes, accidents, injury, damage or loss) or for any other event or cause (e.g. sickness, weather, strike, civil unrest, acts of terrorism, quarantine, acts of God). Or for an losses or additional expenses occasioned thereby. The right is reserved to decline to accept or to terminate participation (without refund) of any person on the tour should such person's health, actions or general deportment impede the operation of the tour or the rights or welfare of the other participants. (\$10 proceeds to Sustaining The Mind Fund)



Rose Art Museum



**BU Behavioral Health
And Science Center**





STUDY GROUP	PHONE#	JANUARY	FEBRUARY
Home reading #1 - Lucie Fisher	395-0989	Every Tuesday	Every Tuesday
		10:30 a.m. in homes	10:30 in homes
Home reading #2 - Corinne Shore	395-8109	Alternate Wednesdays	Alternate Wednesdays
		10 a.m. in homes	10 a.m. in homes
Home reading #3- Paula Davis	860-0561	Every Friday	Every Friday
		10:30 in homes	10:30 in homes
Home reading #4 -Mirta Burstyn	860-0277	Alternate Wednesdays	Alternate Wednesdays
		10 a.m. in homes	10 a.m. in homes
Dominoes for Adults #1-	732-986-4515	Every Monday	Every Monday
Sandra O'Connor		2 p.m.-LA	2 p.m.-LA
Dominoes for Adults #2 -	655-9174	Every Thursday	Every Thursday
Florence Marks		1:30 - LA	1:30 - LA
			(except Brandeis gen. meeting)
Critic's Choice -Peppy Fuerst	409-0761	1st Tuesday @month	1st Tuesday @ month
		01/06 -1:30 in homes	02/03-1:30 in homes
Week-end Group -Ruth Stein	395-8317	Saturday, 01/10	Saturday, 02/14
Second Saturday each month		Snack Room 10:30	Snack Room 10:30
Lunch Bunch - Ruth Stein	392-8317	Saturday, 01/03	
One organizational meeting		Snack Room 10:30	



MORE STUDY GROUPS



STUDY GROUP	PHONE #	JANUARY	FEBRUARY
Women in the News	409-0761	Tuesday, 01/13	
Peppy Fuerst		in homes	
Socrates Café -	409-0253	Tuesday, 01/20	
Elena Stolzer/Eileen Levine	235-9404	1:30 pm Clubhouse	
Broadway Musical DVD	409-0253	Wednesday, 01/14	Tuesday, 02/17
Elena Stolzer/Eileen Levine	235-9404	1:30 pm Clubhouse	1:30 pm Clubhouse
Current Financial Events	655-3227	Wednesday, 01/28	
Ann Corey		1:30 pm Clubhouse	
Women to Women -		Wednesday, 01/07	Wednesday, 02/10
Fran Cohen (January)	665-2075	1:30 pm-Clubhouse	1:30 pm Clubhouse
Sandra O'Connor (February)	732-986-4515		



A BNC Community Service Project

The Knitchicks

We knit and crochet blankets

For the children at the

RWH & St. Peters Children's Hospitals in New Brunswick.

JOIN US (Picture: delivery at St. PETERS)



**Call Beth Curtis-860-9077
or Phyllis Wegbreit, 395-6861, Co-Chairs**



[FOR LEARNED RESEARCH FOLIO](#)
CALL LEAH STEIN- 409-1404.
[FOR LEARNED RESEARCH JOURNAL](#)
[BOOK FUND AND TRIBUTE CARDS](#)
[& STUSTAINING THE MIND CARDS](#)
A-K - DOROTHY GOLUSH, 395-04890
L-Z - LEAH STEIN , 409-1404

<u>Donor</u>	<u>Recipient</u>	<u>Message</u>
Isabelle Tucker	Carol Cohen	Memory of husband, Seymour
Isabelle Tucker	Florence Marks	Memory of sister, Helen
Joyce & Joe Braziller	Florence Marks	Memory of sister, Helen
Gerry Gelber	Jack Levenson	Memory of wife, Evelyn
Enid Rosenbaum	Alberta Mandelblatt	Speedy Recovery
Bernice Grader	Alberta Mandelblatt	Speedy Recovery
Gert Glassen	Alberta Mandelblatt	Speedy Recovery
Beth & Sheldon Curtis	Alberta Mandelblatt	Speedy Recovery
Bernice & Martin Buchalter	Alberta Mandelblatt	Speedy Recovery
Isabelle Tucker	Alberta Mandelblatt	Speedy Recovery
Tammy Goldhammer	Alberta Mandelblatt	Speedy Recovery
Fran Cohen	Alberta Mandelblatt	Speedy Recovery
Muriel Jacobs	Alberta Mandelblatt	Speedy Recovery
Barbara Allen	Alberta Mandelblatt	Speedy Recovery
Bernice Grader	Fran Cohen	Marriage of Granddaughter
Beth & Sheldon Curtis	Fran Cohen	Marriage of Granddaughter
Tammy Goldhammer	Fran Cohen	Marriage of Granddaughter
Ruth Schulder	Fran Cohen	Marriage of Granddaughter
Lorraine & Alan Okun	Fran Cohen	Marriage of Granddaughter
Beth & Sheldon Curtis	Muriel Jacobs	Memory of husband, Herb
Isabelle Tucker	Jerry Schneider	Speedy Recovery
Fran Cohen	Bernice Grader	Bat Mitzvah, Granddaughter

~~~~~  
**Need a ride to Meetings: Call Ilene Freilich – 655-3617**  
**Send Membership Dues to: Norma Rothstein, 721C Delair Road**



## CLEARBROOK CHAPTER BULLETIN STAFF

Fran Cohen, Beth Curtis, Editors

Roz Orland, Graphic Designer

Tammy Goldhammer, Helen Kaufman

## BRANDEIS OFFICERS 2014 – 2015

---

Co-Presidents.....Tammy Goldhammer, Isabelle Tucker  
Co-Vice President, Membership.....Mirta Burstyn, Phyllis Wegbreit  
Co-Vice Presidents, Programs.....Mildred Schneider, Lilly Miller, Ilene Freilich  
Co-Vice Presidents, Fund Raising.....Barbara Allen, Bernice Grader  
Co-Vice Presidents, Study Groups.....Barbara Wellen, Ilene Einzig, Elena Stolzer  
Treasurer.....Beth Curtis  
Financial Secretary.....Norma Rothstein  
Corresponding Secretary.....Alberta Mandelblatt  
Recording Secretary.....Libby Mogilefsky

## JANUARY-FEBRUARY 2015- DATES & EVENTS

Thursday, Jan.15..... Board Meeting, LA 9:30AM  
Thursday, Jan.22,..... Open Meeting- 12:30PM  
Saturday, Feb.7..... George Street Playhouse

### Mission Statement

Brandeis National Committee is an organization committed to providing philanthropic support to Brandeis University, a distinguished Liberal Arts Research University founded by the American Jewish Community. Its membership is connected to the university through activities which reflect the values on which the university was founded; academic excellence, social justice, non-sectarianism, and service to the community.